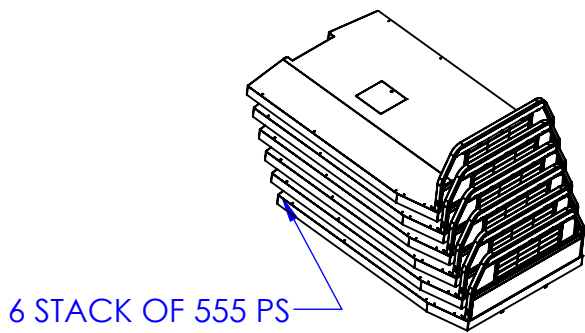
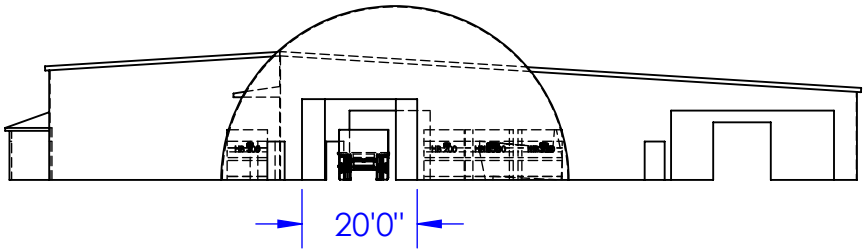
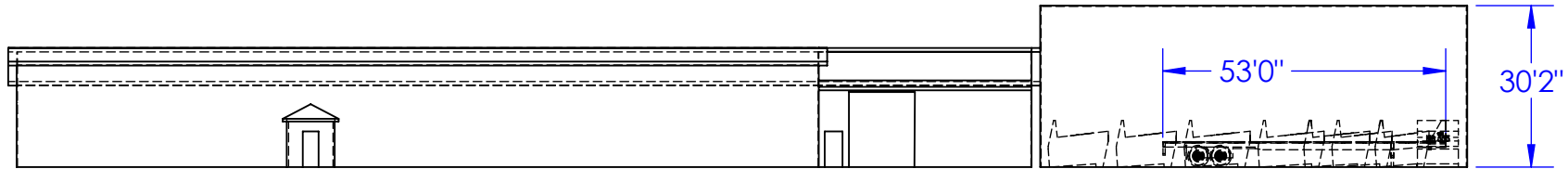
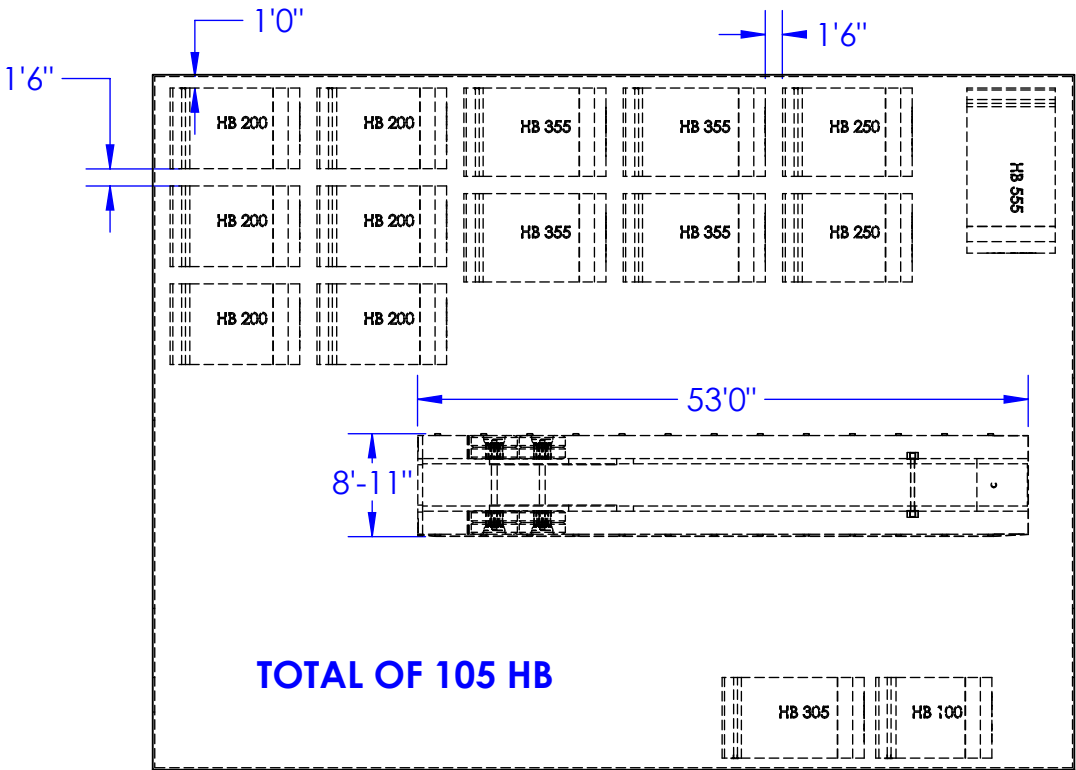
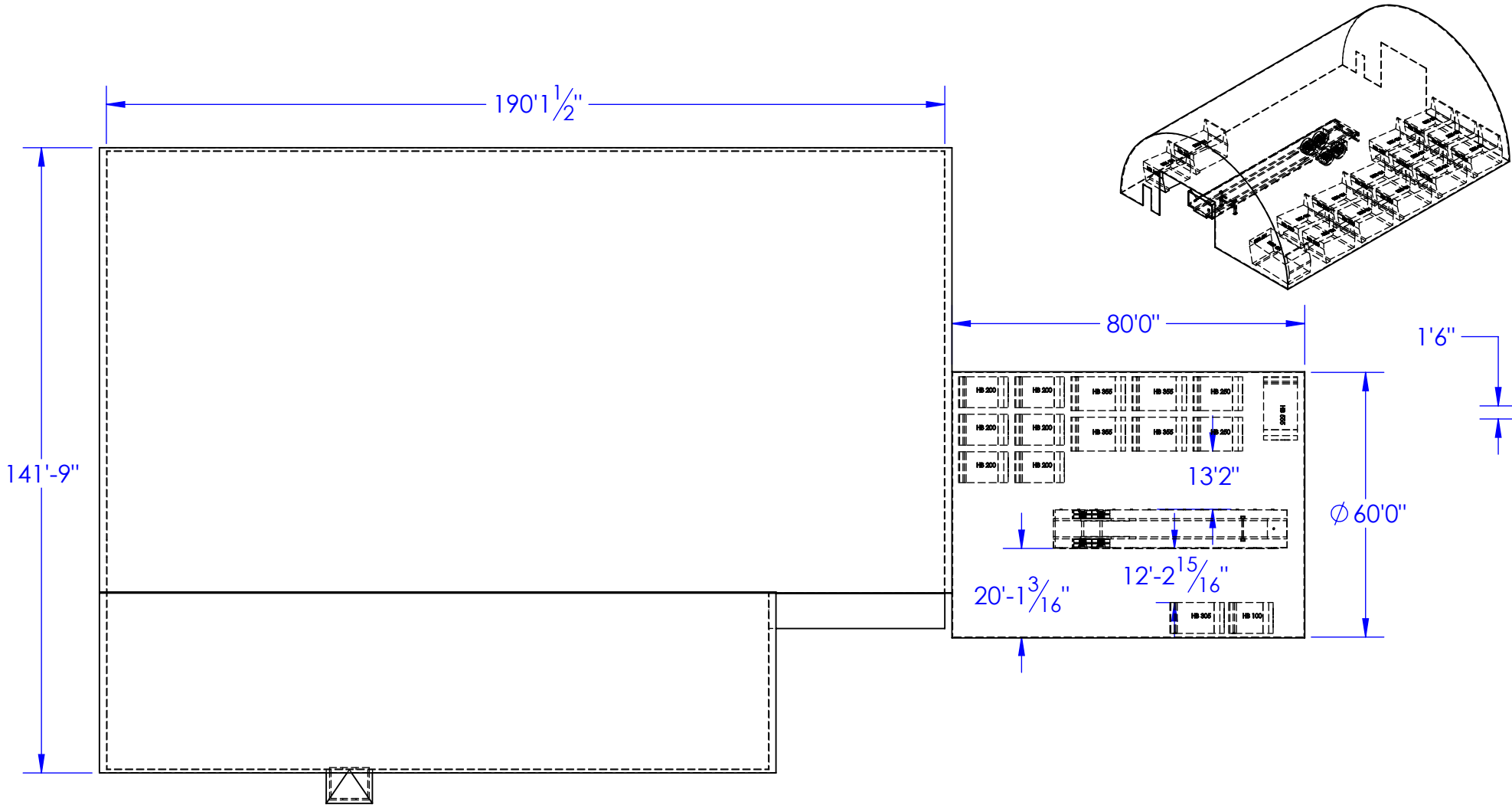
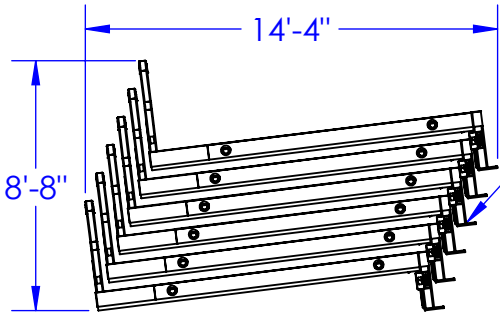


REV.	REVISIONS	DATE	APPROVED
A	INITIAL RELEASE	8/14/2012	
B	ADDED BEDS	10/3/2012	
D	CHANGED BED LAYOUT	10/11/2012	

BED TYPE	WIDTH	LENGTH	QTY. OF BEDS	STACKS
HB-100	7'	7'-6"	7	1
HB-200	7'	8'-8"	42	6
HB-250	7'-8"	8'-8"	14	2
HB-305	7'	9'-9"	7	1
HB-355	7'-8"	9'-9"	28	4
HB-555	7'-8"	11'-9"	7	1



6 STACK OF 555 PS



HYDRA BED STACK 7 HIGH  
AND NEED 9' OF ROOM

**PROPRIETARY AND CONFIDENTIAL**  
THE INFORMATION CONTAINED IN THIS DRAWING IS THE SOLE PROPERTY OF <INSERT COMPANY NAME HERE>. ANY REPRODUCTION IN PART OR AS A WHOLE WITHOUT THE WRITTEN PERMISSION OF <INSERT COMPANY NAME HERE> IS PROHIBITED.

UNLESS OTHERWISE SPECIFIED:  
DIMENSIONS ARE IN INCHES  
TOLERANCES:  
FRACTIONAL ± 1/16  
ANGULAR: MACH ± 1 BEND ±  
TWO PLACE DECIMAL ± 0.010  
THREE PLACE DECIMAL ± 0.005  
MATERIAL  
DO NOT SCALE DRAWING

	NAME	DATE	P.O. BOX 248, SABETHA KS. 66534 (785) 284-3674 FAX (785) 284-3931		
DRAWN	HEATH	10/12/2012	<div>TRIPLE C</div> <div>INC.</div>		
PART #					
ASM #	FA-SHELL TC & HOOP rec C				
COMMENTS:			SIZE	DWG. NO.	REV
TRIPLE C SHELL DRAWING WITH HOOP BUILDING			B	95-1405 D	D
			SCALE: 1:400 WEIGHT:		SHEET 1 OF 1